



Photo Credit: Sam Silvey

The cliff at Deep Creek is owned and managed by the Cumberland Trail State Park. Deep Creek is named for its namesake watershed that drops through the Cumberland Plateau largely unnoticed until it meets up with the nearby Big Soddy Creek. The creek is small, and the drainage is narrow. This fact creates a lush evergreen environment full of hemlocks, broad leaf magnolias, and rhododendron. This narrow and steep creek has also left rock climbers with a hidden gift: STEEP Southern Sandstone. Rock at Deep Creek is grey in color, high in quality, and offers all-around pump and fun routes on predominately overhung angles with slopers, crimps, and

HANDJAMS that leave the route inventory at Deep Creek with a 5.11 and up trend. With the exception of a few isolated climbs, the sun rarely penetrates the canopy long enough to cook in the Summer or warm in the Winter. For this reason, Deep Creek is almost entirely a Summer and Fall climbing destination. The Spring would be great except the fact that past logging and mining above the cliff has disrupted the hydrology of the soils above and causes chronic seepage from mid November to mid June that makes the last several bolts of climbing for many routes unclimbable during the wet season.

Area History

In 2007, acting on a tip from a friend, long-time Chattanooga local and route developer, Steven Farmer, hopped on the newly established Deep Creek section of the Cumberland Trail and followed it right to the base of a Sandstone Feast! Soon there after, a sworn-to-secrecy band of bolters descended upon the cliffs and began laying some serious steel into the showcase 'Main Wall.' Developers included in this first wave of bolting included: Steven Farmer, John Dorrough, Chad Wykle, Dave Wilson, Justin Eiseman, Chad Fowler, and Micah Gentry. This crew established close to 50 routes. Continuing to work closely with Cumberland Trail State Park representatives, an MOU managing climbing and route development at Deep Creek was agreed to, and climbing and route development continued. Local climbers like Anthony Meeks, Sean Kerny, Edward Yates, Cody Averbek, Matthew Gant, and Elden Earnhart joined the ranks and fueled the feverish bolting pace. Meanwhile, in 2010, the Southeastern Climber's Coalition partnered with private and non profit groups like Friends of the Cumberland Trail, Cumberland Trail Conference, and Wild Trails to purchase and establish a parking lot and trail head for the Deep Creek climbing area that is now managed by the SCC Land Trust. As relationships between all parties involved continue to grow today, Deep Creek and the surrounding crags, trails, and wilderness continue to be built-out responsibly with concern for balancing the outdoor recreation opportunity of the area with the valuable biological and conservation values of the larger Three Gorges environment.

Rules & Regs

Approach: Warning! The Deep Creek parking lot is nestled in a rural residential area whose residents appreciate their privacy and peace & quiet. While driving, parking, and hiking, please keep this in mind and drive slowly, yield to residents, and please keep a low-profile while in the parking lot & hiking to the crags.

The Deep Creek parking lot and trail head is owned and managed by the Southeastern Climbers Coalition, and you must obtain a **GATE CODE** to access the lot by following this link and agreeing to the terms of use.

<http://www.seclimbers.org/deep-creek>



SCC General Rules & Regulations

Drive slowly through the community, and please respect that families and their children live and play here.

7:30 The parking lot is closed from Sunset to Sunrise. Violators will be ticketed & towed.

Please close and lock the gate behind you.

Please keep dogs leashed while in the lot.

No Car Camping is permitted in the lot.

No Overnight Parking is permitted in the lot.

No Trespassing within adjacent private properties.

There are 26 marked spaces for parking. Illegally parked vehicles will be TOWED.

Climbing Specific Regulations

No bolting or new route development without a permit. For more information, please contact John Dorrough at jwdorrough@comcast.net or Chad Wykle at chad@rock-creek.com

Do not Leave Fixed Gear (Quickdraws) ever.



Directions: The Deep Creek access is locked and requires a gate code that is accessed on-line through www.seclimbers.org.

1 From Chattanooga, Take I-27 North for approximately 19 miles to a right turn for the Hixson Pike Exit. **2** Take a left on Tsati - go 0.3mi. **3** Right on Dayton Pike- go 0.7mi. **4** Left on Durham- go 0.5mi. **5** Right on Black Valley Road - go 0.1 mi. **6** Left on Hotwater Road- go 2.1mi (up the mtn). **7** Sharp right on Old Hotwater- go 0.5mi. **8** Sharp left on gravel private drive (Follow Signage). **9** Go 0.1mi and fork left onto gravel road following SCC Signs- go 50ft. **STAY LEFT AT THE SPLIT.** **10** Right into gravel parking area.

Driving Landmarks



Area Logistics

Emergency

Dial 911

Season

June - November

Camping

There is no overnight parking permitted in the SCC lot and no camping available in the Deep Creek and Big Soddy Gorges.

The closest camping accommodations are found at Chester Frost Campground located at 2318 North Gold Point Circle, Hixson, TN 37343. (P) 423-842-0177

The local Chattanooga hang out, The Crashpad, is also a great option for those willing to commute from Chattanooga. You can find them on the web at: www.crashpadchattanooga.com or give them a call at: (423) 648-8393.

Food

The towns of Soddy & Daisy (now Soddydaisy) have a good selection of fine establishments. Just cruise the main drag (head south on Dayton Pike back towards Daisy), and you will encounter some nice options.

Area Approaches

Approach for The dungeon, The Wave Wall, The Deep End, The Warm-Up Wall, and The Main Wall (left & right):

① From the parking lot, locate the trail head next to the kiosk. Follow the trail across the plateau until it veers slightly right and down a series of stone stairs. ② At the base of these stairs, cross a logging road and head down to a sign directing you to a lower logging road that leads downhill and right to the intersection with the Cumberland Trail (signage here). ③ From this point, head left down the CT to the point where it crosses another logging road (see directions to Hemlock Block here) and eventually Deep Creek via a bridge. ④ Cross Deep Creek and take a few switchbacks where the Main Wall will become visible. ⑤ From here, take a climber's trail uphill and left where the CT veers right and continues along a bench (see directions for Tea & Crumpets here). Taking this climber's trail will deposit you at the base of Willy Vs Dave, 11b.

Approach for the Memorial Day Wall, the Hydro Wall, the Creekside, the Stallion Cave, and the Perch:

Follow ①-⑤ to the Main Wall. From this point, hike climber's left all the way to the farthest left section of cliff at the main wall (the dungeon). ⑥ Where the cliff ends, pick up a climber's trail that angles along the steep hillside for 15 minutes to a short scramble up to the first route encountered from this direction: ⑫ **Strikeforce Unicorn**. ⑦ Hike left to the Stallion Cave and surrounding walls.

Approach for the Tea & Crumpets Wall:

Follow ①-⑤ to the Main Wall across Deep Creek and to the base of the Main Wall, but instead of continuing up to Deep Creek proper, ⑧ head right along the CT for approximately 10 minutes. ⑨ Look for a climber's trail that contours up a hill on your left immediately after crossing a small footbridge with rails.

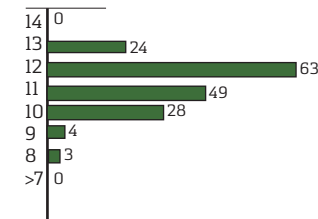
Approach for the Land Between, The Point, Willy World, and the Woodshed:

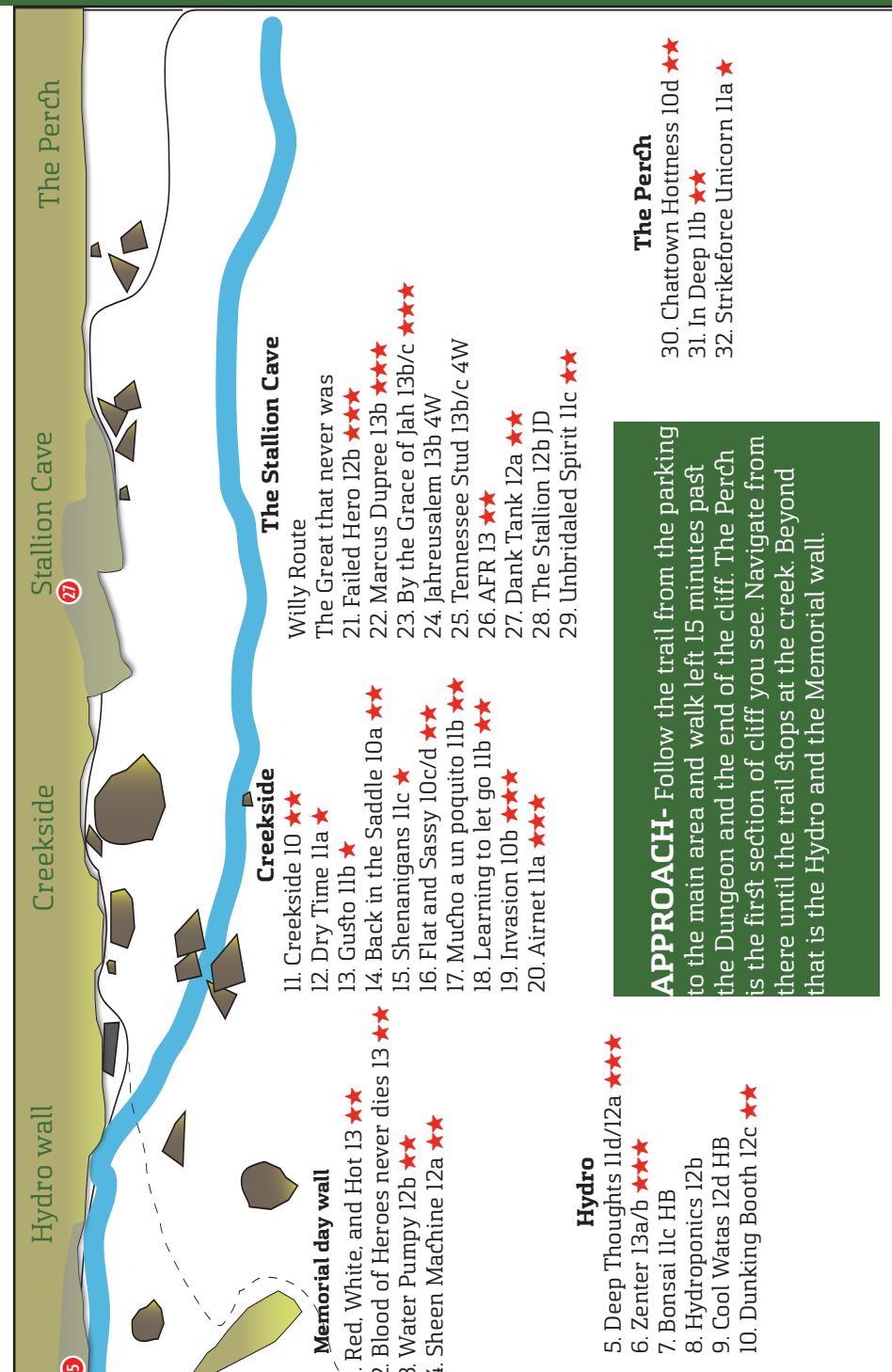
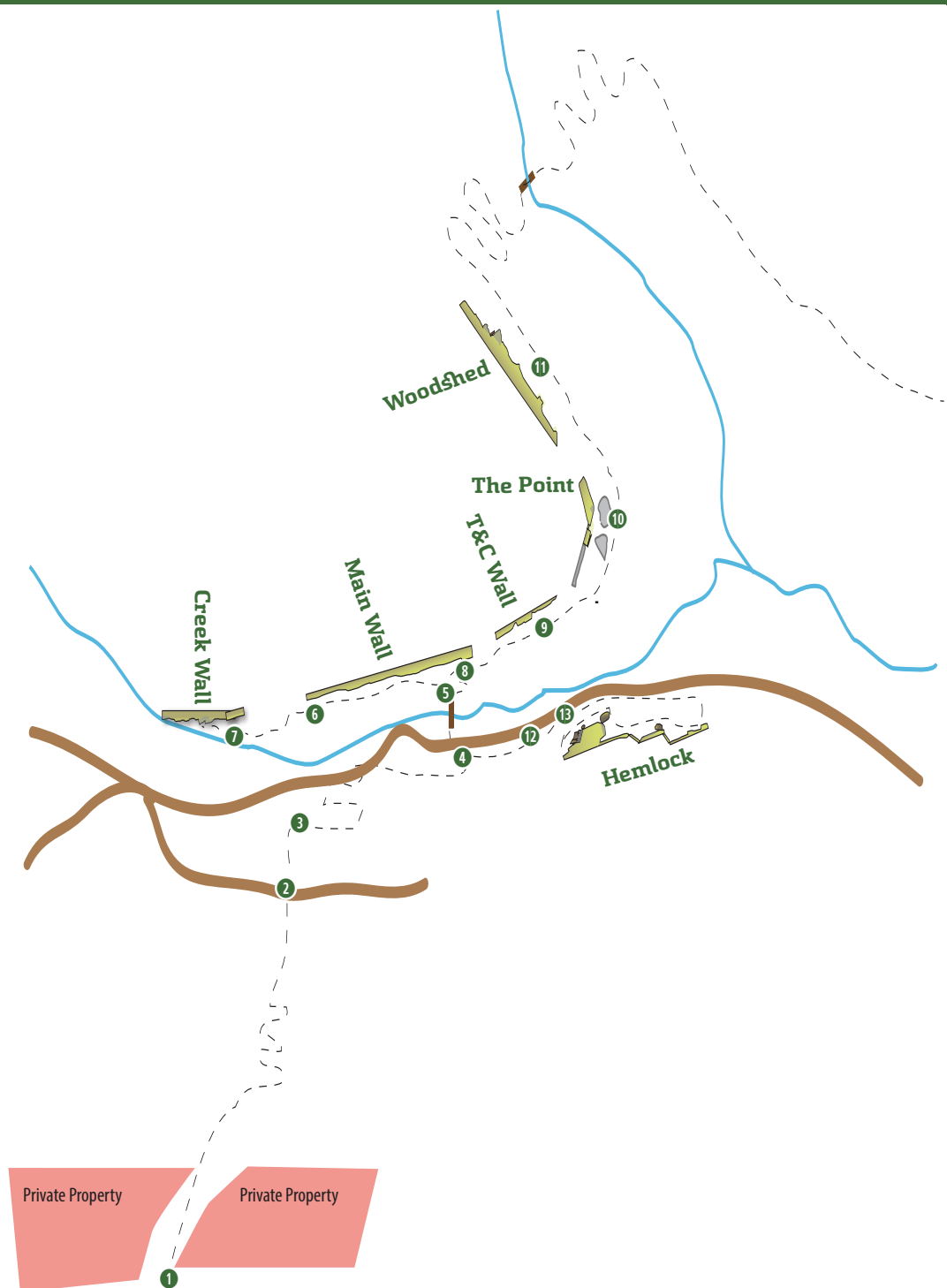
Follow directions ①-⑨ to the Tea & Crumpets Wall, but instead of heading up and left on the climber's trail, stay on the CT for another 5 minutes until the tall and vertical walls of the Land Between become visible on the left. ⑩ Look for a climber's trail and head up and left. ⑪ Traverse the cliff line right for 5-10 minutes to reach areas like Willy World & the Woodshed (or return back down to the CT below and do the same).

Approach for the Hemlock Block, the Shadow Wall, and the Little Hemlock Wall:

Follow the Main Wall directions until the CT crosses the lower logging road just before the Deep Creek bridge ④. From this intersection, hike right ⑫ along this heavily graveled road for approximately 10 minutes until the Hemlock block becomes visible on your right ⑬.

Routes







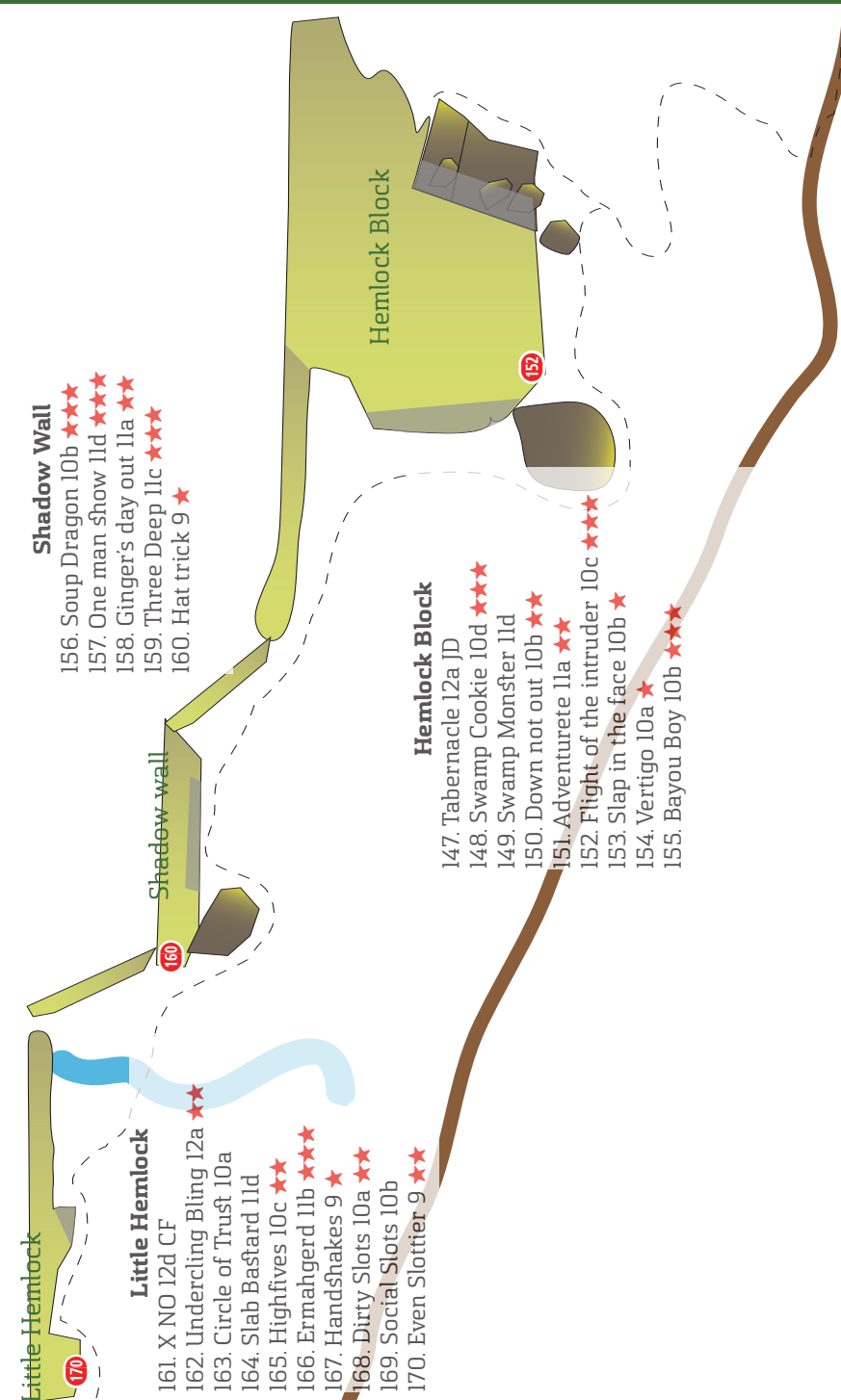
ROCK/STEADY

Your local shop for over 25 years. Check out our new location at The Block, next to High Point Climbing in downtown Chattanooga.



rockcreek.com

photo by Andrew Kornylak, Whitney Boland climbing Deep Creek





HEMLOCK BLOCK

This was the most recently developed area but by far the most amazing moderate climbing in the gorge. Check out the classic climbs hidden in the shadows of the mighty hemlocks.

147 **Tabernacle 12a** ☐



This route is located on the right side of the wall. Climb onto the block to start the service. Give thanks for all that is steep and juggy. 9 bolts. Micah Gentry 2011

148 **Swamp Cookie 10d** ★★★ ☐

Scramble up the blocks to high first clip at roof. Follow a long line of bolts to finish below the final roof or make the moves out the roof and up the final face. Elden Earhart 2011

149 **Swamp Monster 11d** ★★★ ☐

This is the full value line to Swamp Cookie. TO THE TOP. Matthew Gant and Elden Earhart

150 **Down not out 10b** ★★★ ☐

Shares the same start as Swamp Cookie. Make some committing initial moves out roof on jugs and break left. Follow the tower of interesting holds to the top. Micah Gentry and Mike Cork 2011

151 **Adventurete 11a** ★★ ☐

Start on the ledge 15ft up and left of Down not out and climb through an easy corner to the base of an arete. You may want an extra long draw or clip/un-clip at the roof to avoid some drag. Crank what you got to the top. FUN! Micah Gentry 2011





Jill Sompel on the blessed stone of Tabernacle, S.12a.

Photo Credit: Micah Gentry

152 Flight of the intruder 10c ★★★ ☐
Start 80 ft left of "adventurete". Follow a low corner up to an intimidating roof. Take a breather and then attack the top on well-spaced horizontal jugs. Great view from the top. Micah Gentry

153 Slap in the face 10b ★ ☐
Manage the reachy first moves without feet and you can balance up this arete to a well protected final crux above the ledge. Micah Gentry

154 Vertigo 8 ★ ☐
A long reach will start you on this dizzy adventure. Guaranteed to be no harder than 8 by Captain Earhart. Certain to keep you on your toes for the grade. Elden Earhart

155 Bayou Boy 10b ★★★ ☐
Funtastic climbing through dirtier holds warms you up for the top half's more challenging climbing. Micah Gentry and Elden Earhart fall 2011



Tabernacle, 12a



Deep Creek Hippy Routes
(Setting, wall position, and beauty)

Flight of the Intruder, 5.10c	<input type="checkbox"/>
Holy AND Hip, 5.11a	<input type="checkbox"/>
Lights of the Dead, 5.11b	<input type="checkbox"/>
Proven Ground, 5.12a	<input type="checkbox"/>
Cool Watas', 5.12d	<input type="checkbox"/>



Bethany Macke taking off on Flight of the Intruder, 5.10c.

Photo Credit: Micah Gentry